



O.P. Jindal Global University
A Private University Promoting Public Service
NAAC Accreditation - 'A' Grade



INTERNATIONAL INSTITUTE FOR
HIGHER EDUCATION RESEARCH &
CAPACITY BUILDING
Institution Building for Nation Building
O.P. JINDAL GLOBAL UNIVERSITY

International Institute for Higher Education Research and Capacity Building

&

Centre for Comparative and Global Education

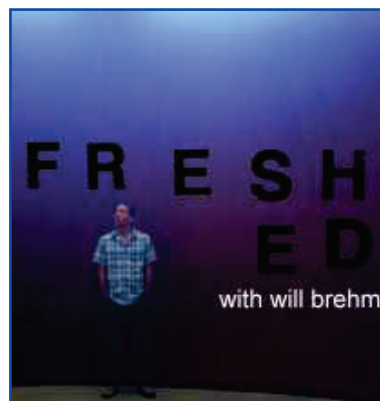
cordially invite you to participate in

THINKING THURSDAYS: IIHed Research Seminar Series

on

**Podcasting CIE through FreshEd:
What does a podcast reveal about an academic field?**

by



Will Brehm, PhD

**Assistant Professor
Waseda University, Tokyo, Japan**

Short Bio of Speaker

Will Brehm, PhD is an Assistant Professor at the Waseda Institute for Advanced Study, Waseda University, Tokyo, Japan. His research interests include the intersection of comparative and international education with international relations and the political economy of development, focused primarily in Southeast Asia. He is currently conducting a comparative research project that explores historical memory and schooling across Cambodia, Laos, Myanmar, Thailand, and Vietnam (funded by a Kakenhi Start-Up research grant). He also consults for the World Bank in Cambodia and the Asian Productivity Organization in Tokyo, teaches at Waseda's Graduate School of Asia Pacific Studies, the University of Tokyo, and Keio University, and hosts a weekly podcast on education, globalization, and society called FreshEd.

Date: Thursday, 2 November 2017 | Time: 5:00 pm

Venue: Class room No- 43 (T3 2nd floor), O. P. Jindal Global University, Sonipat-131001, Haryana

Faculty Coordinator: Dr. Mousumi Mukherjee, Assistant Director, IIHed, mmukherjee@jgu.edu.in